

JVC

SCHEMATIC DIAGRAMS

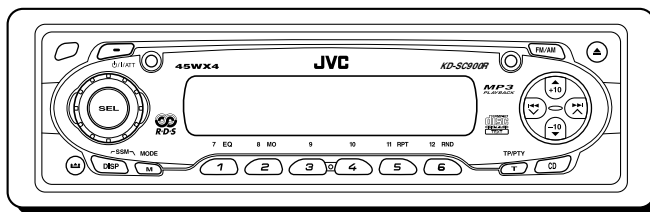
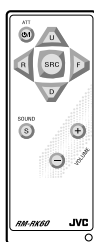
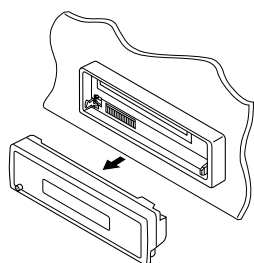
CD RECEIVER

KD-SC900R

CD-ROM No.SML200304

Area Suffix


E ----- Continental Europe
 EX ----- Central Europe



Contents

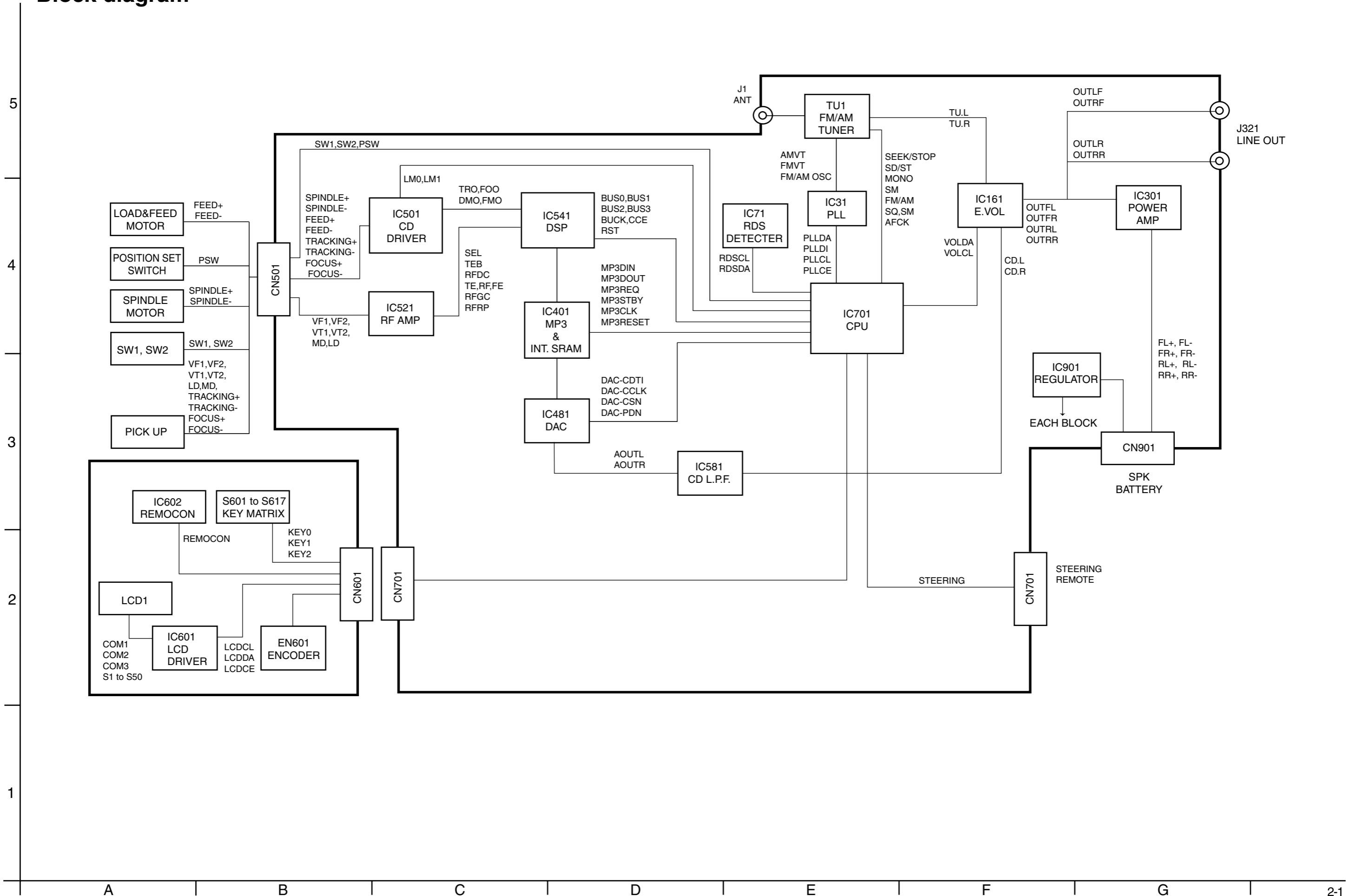
Block diagram	2-1
Standard schematic diagrams	2-2
Printed circuit boards	2-5 to 7

Safety precaution

 **CAUTION** Burrs formed during molding may be left over on some parts of the chassis. Therefore, pay attention to such burrs in the case of performing repair of this system.

 **CAUTION** Please use enough caution not to see the beam directly or touch it in case of an adjustment or operation check.

Block diagram



Standard schematic diagrams

■ Main amplifier section

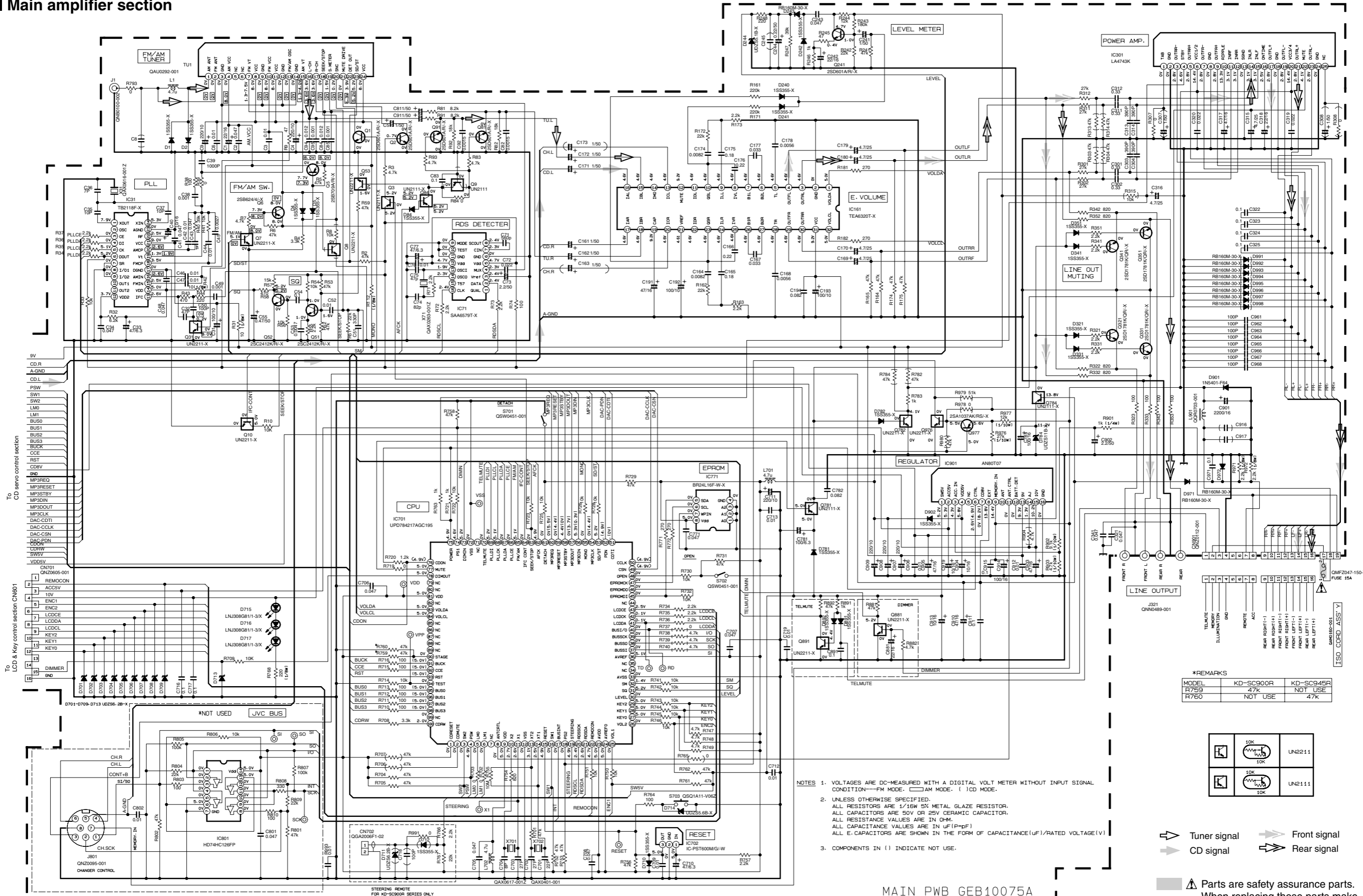
5

4

3

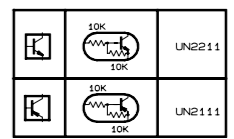
2

1



*REMARKS

MODEL	KD-SC900R	KD-SC945R
R759	47k	NOT USE
R760	NOT USE	47k

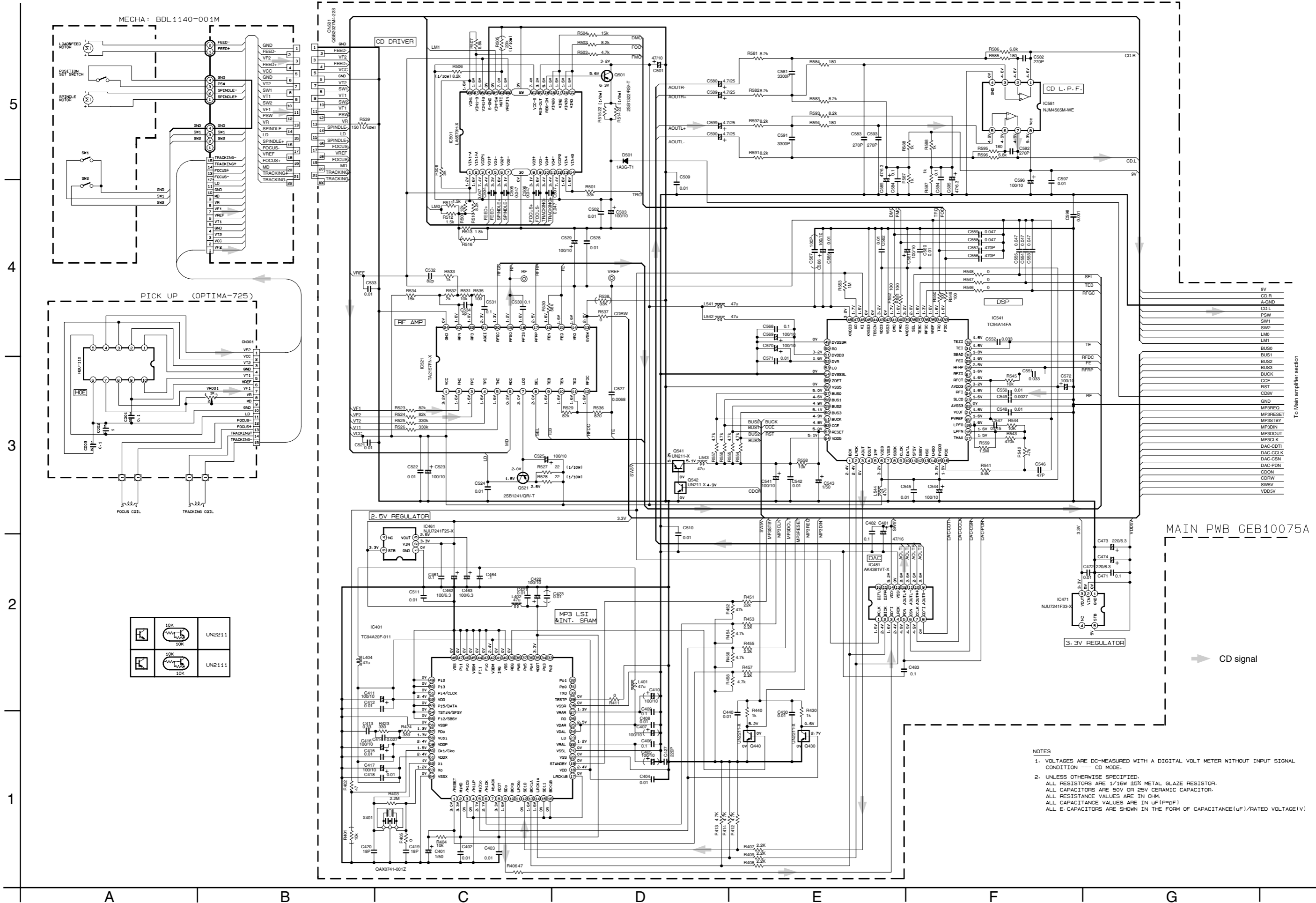


- NOTES
- VOLTAGES ARE DC-MEASURED WITH A DIGITAL VOLT METER WITHOUT INPUT SIGNAL CONDITION—FM MODE. □ AM MODE. () CD MODE.
 - UNLESS OTHERWISE SPECIFIED, ALL RESISTORS ARE 1/16W 5% METAL GLAZE RESISTOR. ALL CAPACITORS ARE 50V OR 25V CERAMIC CAPACITOR. ALL RESISTANCE VALUES ARE IN OHM. ALL CAPACITANCE VALUES ARE IN UF (P=PF) ALL E-CAPACITORS ARE SHOWN IN THE FORM OF CAPACITANCE(UF)/RATED VOLTAGE(V)
 - COMPONENTS IN () INDICATE NOT USE.

- Tuner signal
 - Front signal
 - CD signal
 - Rear signal
- ▲ Parts are safety assurance parts. When replacing those parts make sure to use the specified one.

MAIN PWB GEB10075A

CD servo control section



To Main amplifier section

MAIN PWB GEB10075A

CD signal

- NOTES
1. VOLTAGES ARE DC-MEASURED WITH A DIGITAL VOLT METER WITHOUT INPUT SIGNAL CONDITION --- CD MODE.
 2. UNLESS OTHERWISE SPECIFIED, ALL RESISTORS ARE 1/16W ±5% METAL GLAZE RESISTOR. ALL CAPACITORS ARE 50V OR 25V CERAMIC CAPACITOR. ALL RESISTANCE VALUES ARE IN OHM. ALL CAPACITANCE VALUES ARE IN UF (P=PF) ALL E. CAPACITORS ARE SHOWN IN THE FORM OF CAPACITANCE(UF)/RATED VOLTAGE (V)

■ LCD & Key control section

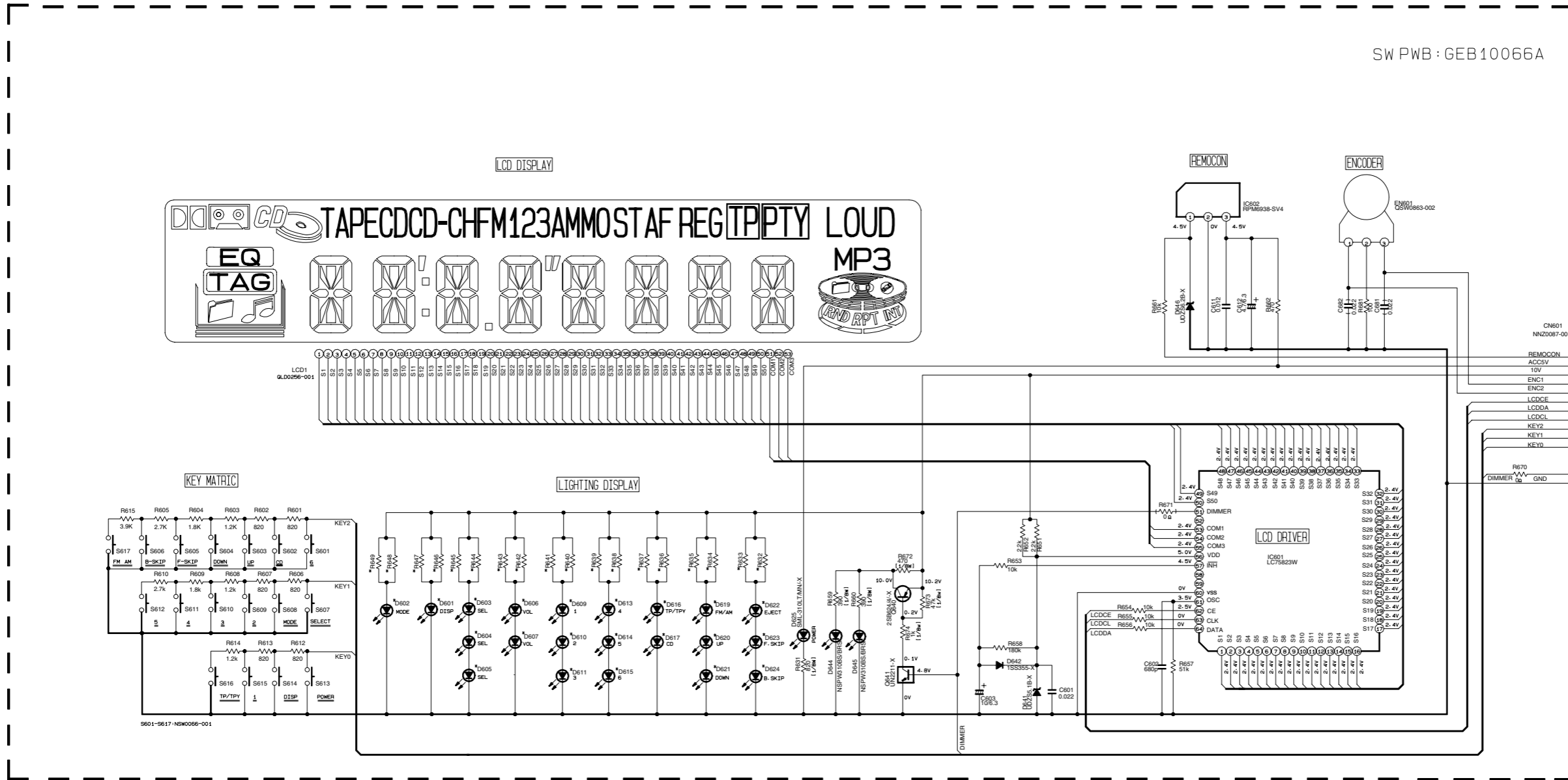
5

4

3

2

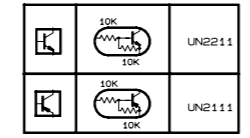
1



SW PWB : GEB10066A

*REMARKS

MODEL	KD-SC900R	KD-SC945R
D601-D607		
D609-D611	SML-310VT/JK/-X	LNJ308G81/1-3/X
D613-D617		
D619-D624		
R632 R633	560	510
R634 R635	560	510
R636 R637	820	820
R638 R639	510	510
R640 R641	510	510
R642 R643	820	820
R644 R645	560	510
R646 R647	1.2k	1.2k
R648 R649	1.2k	1.2k



NOTES

1. VOLTAGES ARE DC-MEASURED WITH A DIGITAL VOLT METER WITHOUT INPUT SIGNAL.
2. UNLESS OTHERWISE SPECIFIED, ALL RESISTORS ARE 1/16W METAL GLAZE RESISTORS. ALL CAPACITORS ARE 50V OR 25V CERAMIC CAPACITOR. ALL RESISTANCE VALUES ARE IN OHM. ALL CAPACITANCE VALUES ARE IN uF (P=pF). ALL E-CAPACITORS ARE SHOWN IN THE FORM OF CAPACITANCE(uF)/RATED VOLTAGE(V). T --- TANTALUM CAPACITOR.
3. COMPONENTS IN () INDICATE NOT USE.

Printed circuit boards

■ Main board

5

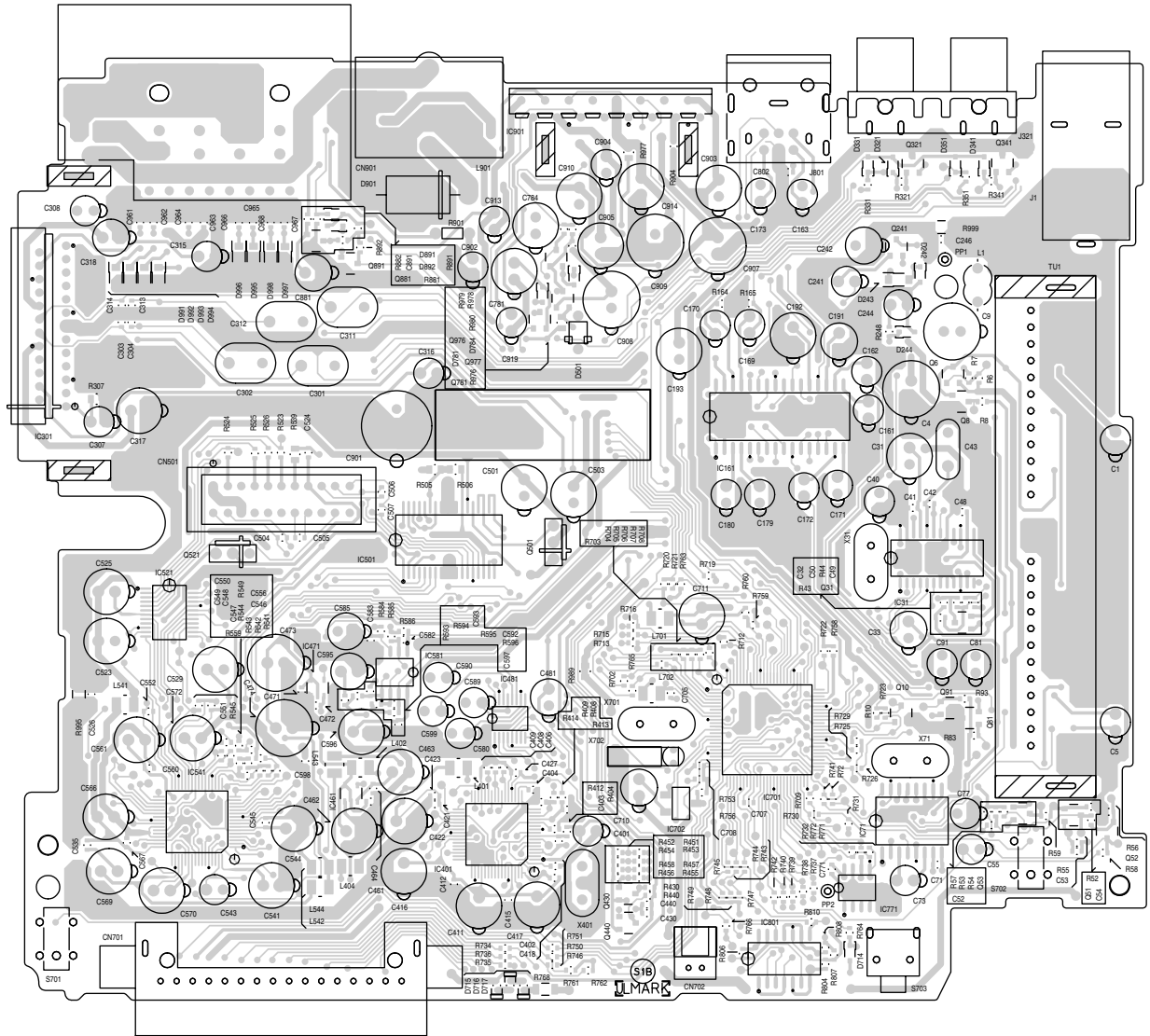
Forward side

4

3

2

1



A

B

C

■ Main board

Reverse side

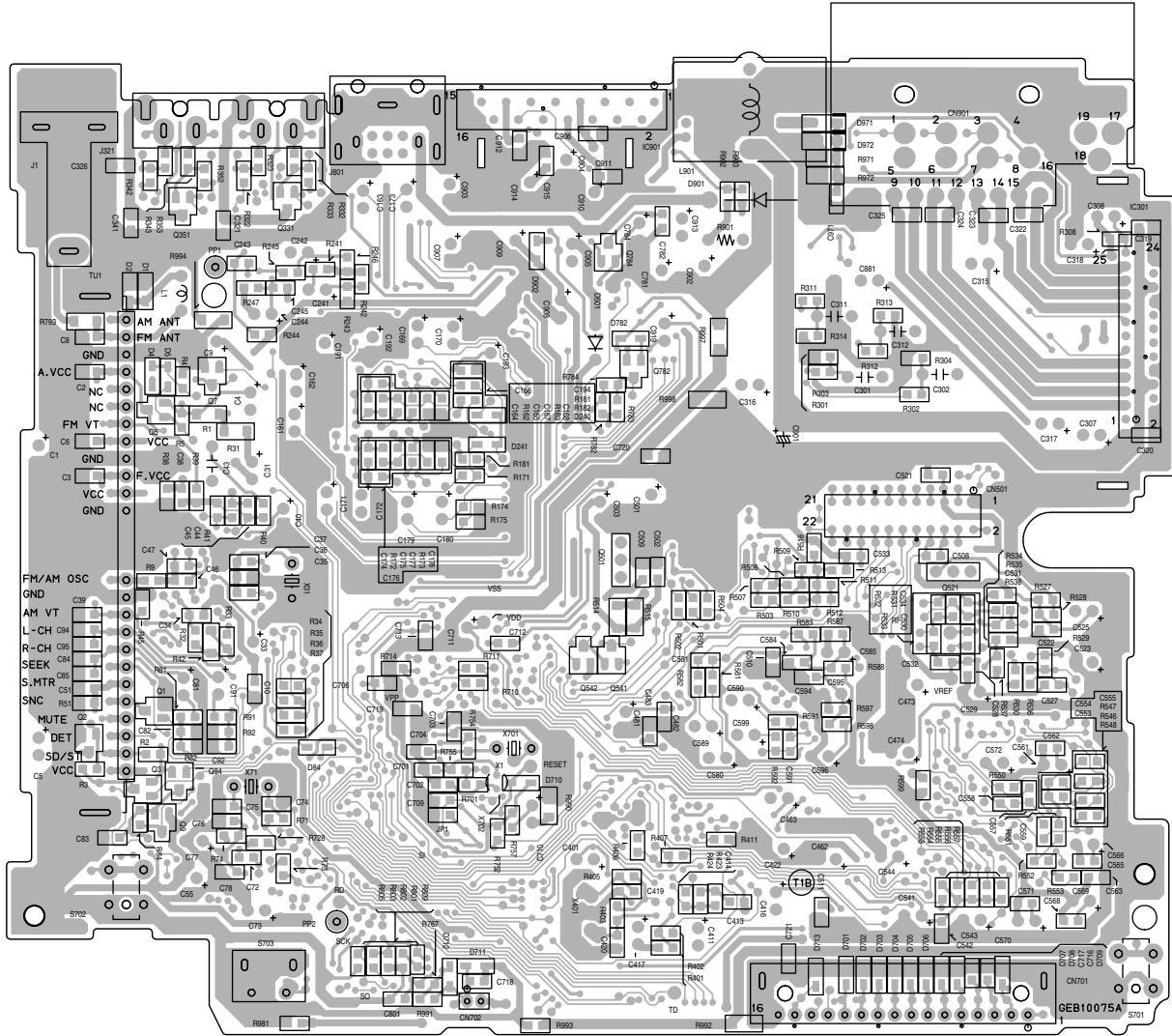
5

4

3

2

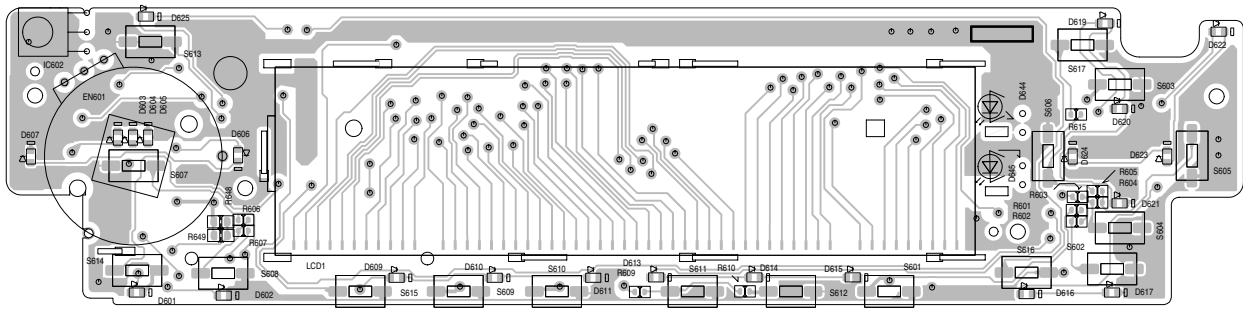
1



■ Front board

5

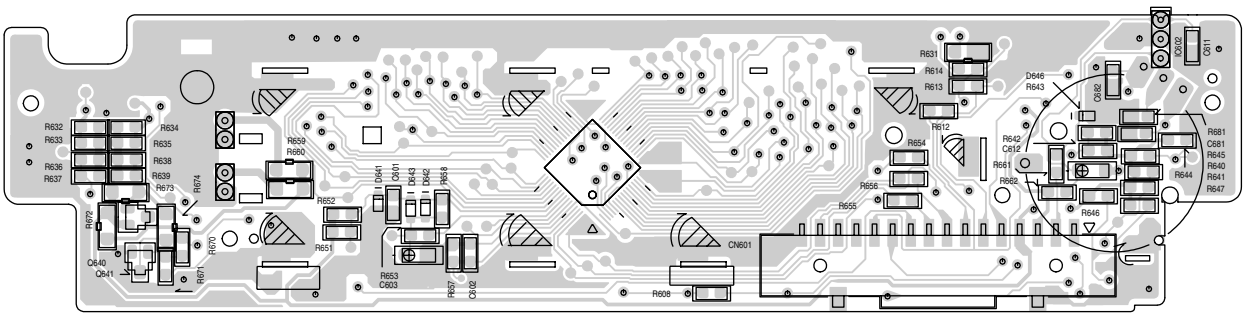
Forward side



4

3

Reverse side



2

1

A

B

C

KD-SC900R

JVC

VICTOR COMPANY OF JAPAN, LIMITED

AV & MULTIMEDIA COMPANY 10-1, 1Chome, Ohwatari-machi, Maebashi-city, 371-8543, Japan

(No.49829SCH)



Printed in Japan
2003/04